



**burmatex** is one of the UK's leading designers and manufacturers of contract carpet tiles & planks. Product ranges span fiber bonded, structure bonded, loop pile, cut pile and textured loop pile carpets in sheet and tiles, as well as performance barrier system and entrance matting products.

Our eco friendly portfolio focuses on the design and creation of innovative products to meet the needs of architects and contractors with a continuously expanding range of carpets to suit the education, leisure, commercial and public sectors.

## CARPET TILE & PLANK

### carpet tiles



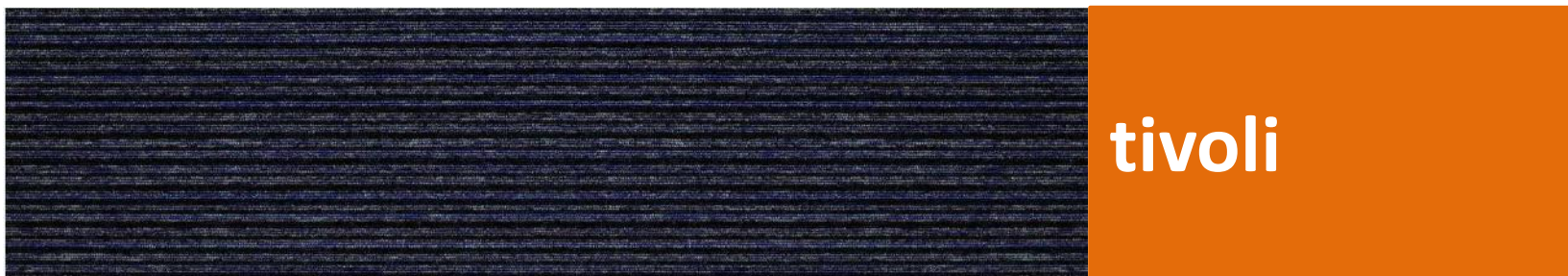
- Product description - Low Level Loop
- Yarn description - 100% Solution Dyed Nylon (Polyamide-PA)
- Size - 50cm x 50cm
- Pile weight - 620g/m<sup>2</sup>
- Total weight - 4100g/m<sup>2</sup>Total
- Thickness - 6mm

### carpet plank



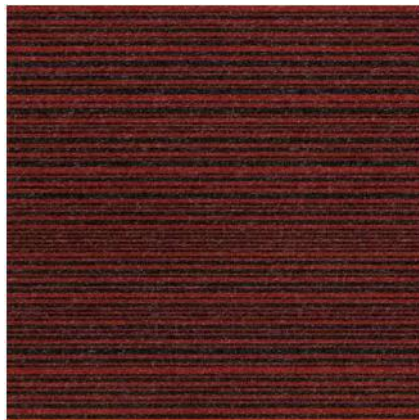
- Product description - Low Level Loop
- Yarn description - 100% Solution Dyed Nylon (Polyamide-PA)
- Size - 25cm x 100cm
- Pile weight - 620g/m<sup>2</sup>
- Total weight - 4100g/m<sup>2</sup>Total
- Thickness - 6mm

## CARPET PLANKS





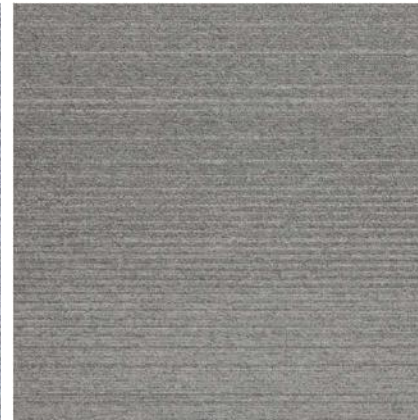
## LOOP PILE CARPET TILES



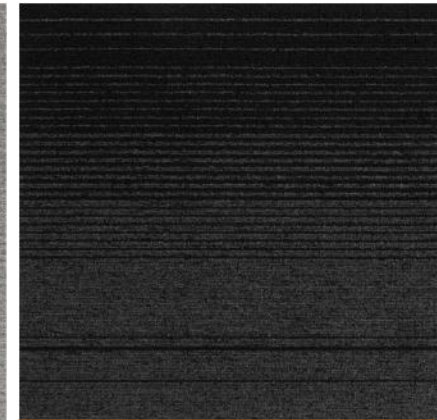
go to



infinity



grade



balance echo



tivoli



balance atomic



balance greyscale

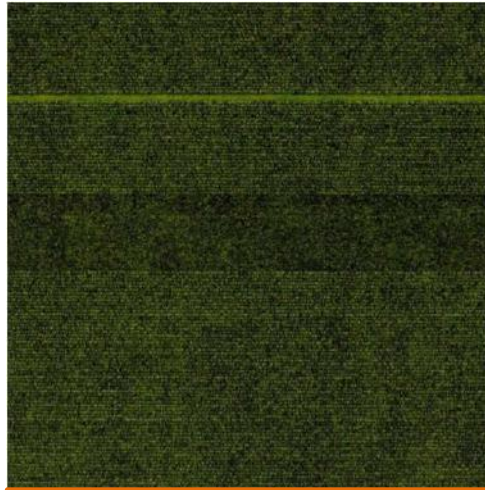


balance

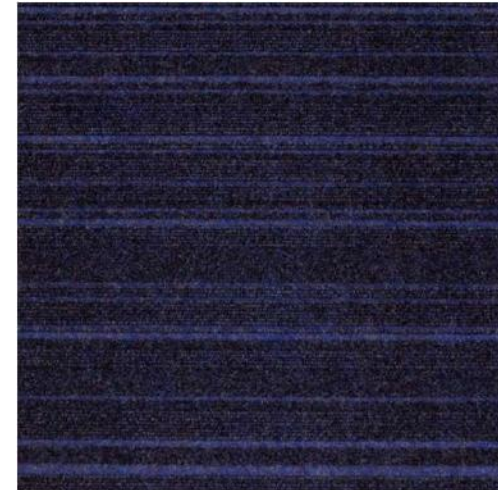
## STRUCTURE BONDED CARPET TILES



lateral



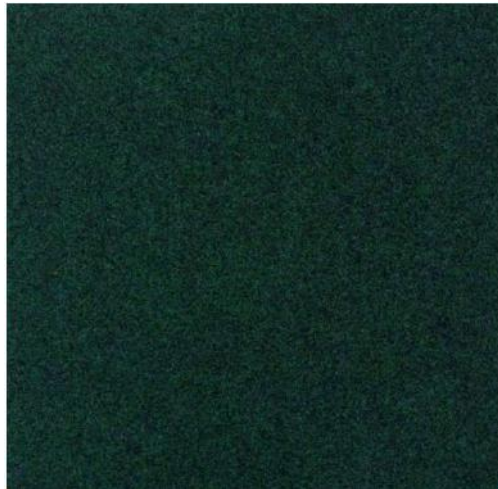
zip



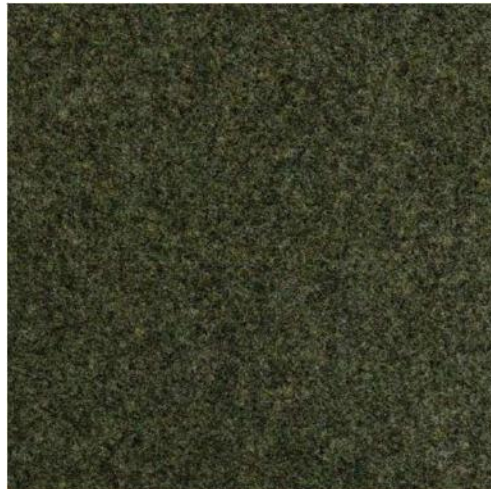
code



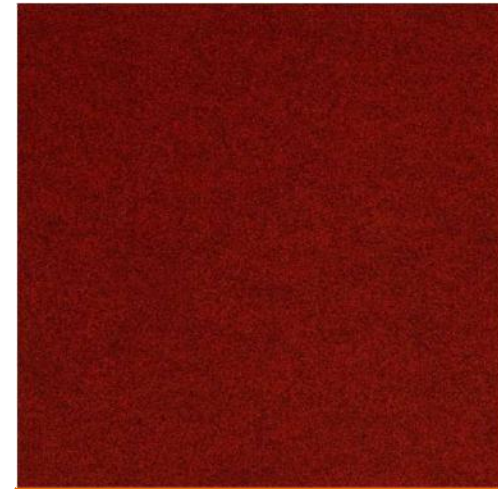
## FIBER BONDED CARPET TILES & SHEETS



rialto



3230 classic



Overlander – giant tile



*The future of workplace*

# THANK YOU!

Please contact our below sales team for any further assistance.

Ms. Shefali Rana - +91 7028465228 / [shefali@cherryhill.in](mailto:shefali@cherryhill.in)

**CHERRY HILL INTERIORS LIMITED**